

Symphony No. 1 in C Major, Op. 21

Beethoven

Mvmt I : Melody A

Hear ye! Hear ye! Now we be - gin!

Mvmt I : Melody B

Here's num - ber one, and you know there will be nine be - fore the

great Bee - tho - ven's done.

Mvmt I : Melody C

The o - boe starts a tune That by the flute is echoed

soon, You hear them blending, as - cend - ing, ab - ove the soft bas - soon.

Mvmt II : Melody A

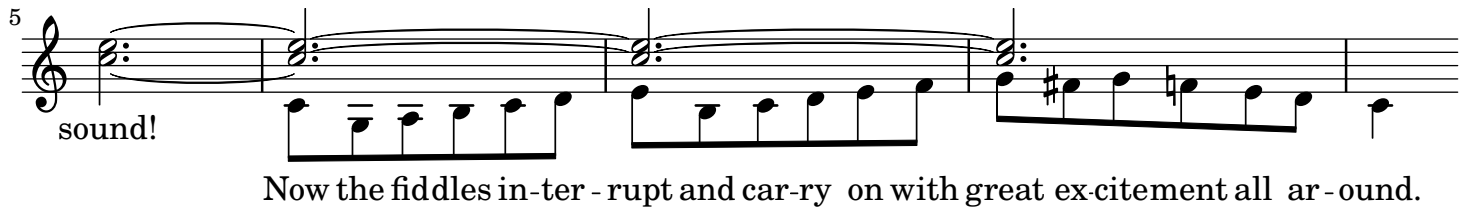
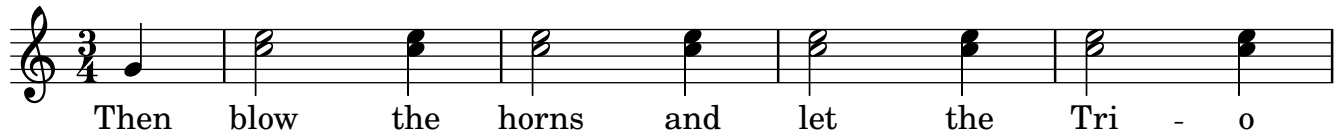
An-dante means going, The tune just a little slowing, As Beethoven does it so well.

Mvmt II : Melody B

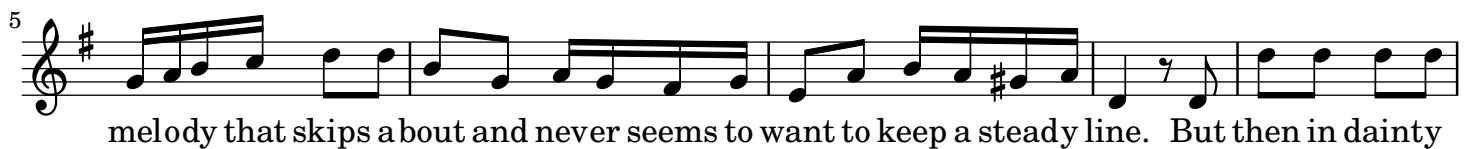
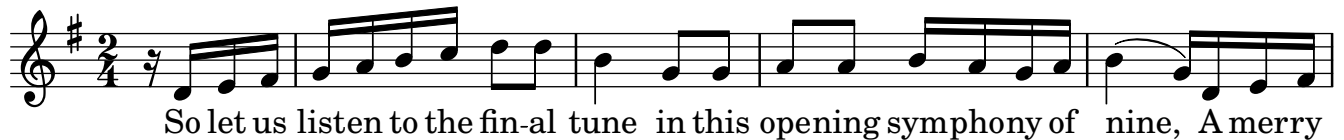
Mvmt III : Melody A

This min - u - et goes right up the scale, Its mu - sic sounds so hearty and hale.

Mvmt III : Melody B



Mvmt IV : Melody A



Mvmt IV : Melody B



Mvmt IV : Melody C

